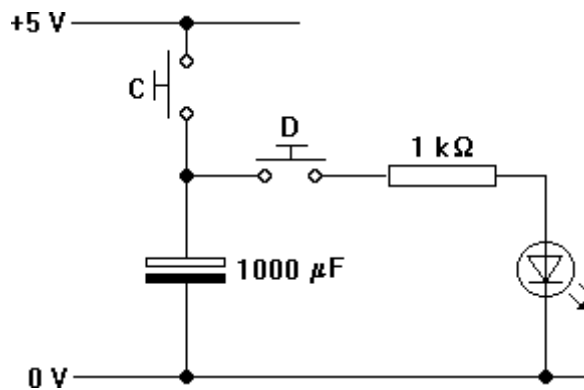
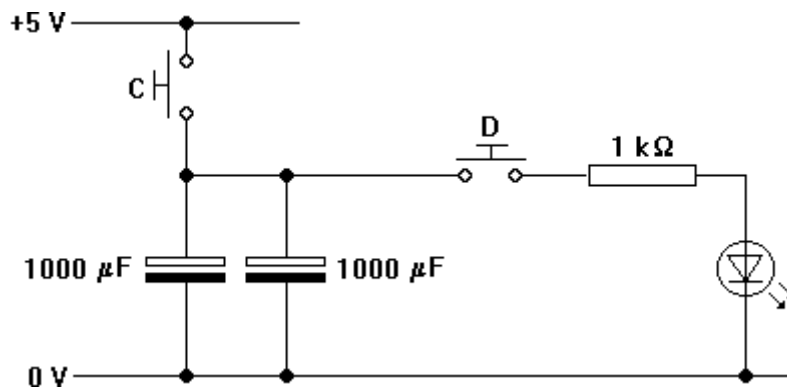


### Charging and discharging a capacitor

1. Assemble the circuit shown below. Be careful to get the capacitor connected round the right way.



2. Press C and release it; then press D. There should be a brief flash of light from the LED. Explain why.
3. Insert a second 1000 µF capacitor in parallel with the one already there. Investigate what difference this makes.



4. Now place the capacitors in series with each other. What happens?

